

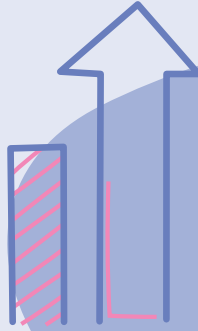


THE BENEFITS OF BECOMING A Licensed Family Child Care Home Provider



Serve More Children

As a licensed Family Child Care Home (FCCH) provider, you can serve more children than you can as an unlicensed Family, Friend, or Neighbor (FFN) provider.



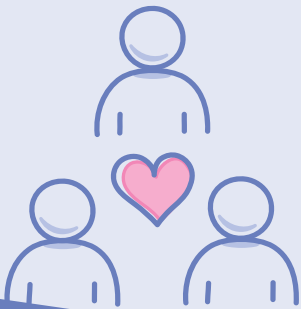
Increase Your Earnings

Not only can you serve more children as a Family Child Care Home (FCCH) provider, but you can also receive a higher reimbursement rate. In some cases, you can receive an additional \$250 per month per child.



Business Ownership

As an FCCH provider, you will own your own business and be your own boss. You can set days and hours of your business to meet your needs and those you serve.



Support Network

As an FCCH provider, you will have a network of other licensed providers to share with and learn from both personally and professionally.



Professional Development

Training and professional development opportunities are structured to assist early educators providing quality learning environments for the children they serve in their programs.



COST DIFFERENCE

Below is the difference between the maximum child care subsidy reimbursement amounts between Family, Friend, and Neighbor (FFN) and licensed FCCH care.

Full-Time

Age Group	Weekly			Monthly		
	FFN	Licensed FCCH	Benefit to FCCH	FFN	Licensed FCCH	Benefit to FCCH
Birth to 24 Months	\$153.51	\$219.30	\$65.79	\$630.00	\$900.00	\$270.00
2 through 4 Years	\$140.65	\$200.93	\$60.28	\$574.54	\$820.77	\$246.23
School Age	\$120.79	\$172.56	\$51.77	\$495.13	\$707.33	\$212.20

Part-Time

Age Group	Weekly			Monthly		
	FFN	Licensed FCCH	Benefit to FCCH	FFN	Licensed FCCH	Benefit to FCCH
Birth to 24 Months	\$114.98	\$164.11	\$49.13	\$481.98	\$688.54	\$206.56
2 through 4 Years	\$111.67	\$159.53	\$47.86	\$428.14	\$611.62	\$183.48
School Age	\$93.69	\$133.84	\$40.15	\$369.77	\$528.24	\$158.47

That means...

As an FFN, you can only watch the children from one family other than your own.

Let’s say that one family has two children, a 12-month-old and a 3-year-old, for whom you provide full-time care. That would be a monthly reimbursement of \$1,204.52.

If you became a small licensed FCCH, you can watch up to 8 children and your monthly reimbursement rate increases to \$1,720.77 for those same children, which is over \$500 more. In addition, you could care for up to 6 more children.

Your reimbursement as a licensed FCCH could look like this:

2 full-time infants	\$1,800.00
4 full-time preschool	\$3,283.08
2 part-time school age	\$1,056.48
	\$6,139.56

Contact Resource and Referral (R&R) today to find out more about the supports available to you to become a licensed family child care home provider.



(951) 826-6626/(800) 442-4927
randr@rcoe.us
www.rcoe.us/child-care