



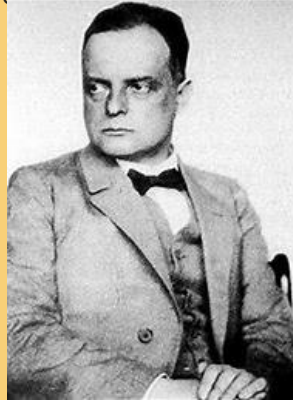
Klee Collage

Louisa Higgins,
Arts Administrator,
Riverside County Office of Education



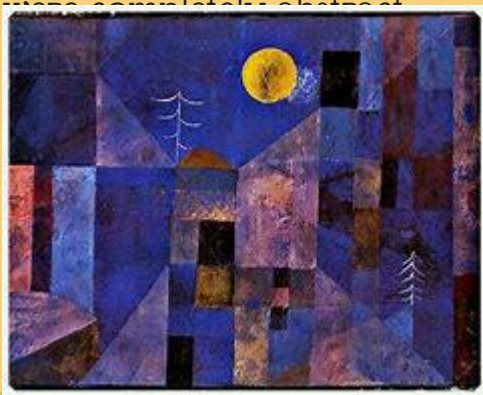
Background

Paul Klee was a Swiss-born German artist. His highly individual style was influenced by movements in art that included [expressionism](#), [cubism](#), and [surrealism](#). Klee was a natural draftsman who experimented with and eventually deeply explored [color theory](#).



Background

His works often have a fragile childlike quality to them and are usually on a small scale. He often used geometric forms and **grid format** compositions as well as letters and numbers, frequently combined with playful figures of animals and people. Some works were completely abstract.





“Shapes” handouts in different colors of paper, scissors, glue stick




Necessary Materials





How to Make a Klee Collage

- Cut out a variety of different shapes (at least 10)
 - Position them on your paper with intention – could be abstract, or a cityscape
 - Do the totals and math work on the back of the art piece
- 



A picture is worth a
thousand words



A decorative floral border in the top-left corner, featuring dark green vines, red flowers, and small red berries.

Art Making Time

Put the music on

Whatever is going to relax you and put you into a creative “flow”

Make your art

You can either follow the instructions strictly, or modify as it suits



Gallery Walk

Show your work and let us know which elements you thought were especially successful + share praise for others' creativity!



Let's Do the Math!

Klee Art

Number of Squares: ____

Circles: ____

Triangles: ____

Rectangles: ____

Total number of shapes: _____

Fraction of total picture: _____ Reduce to lowest terms: _____

Squares _____

Circles _____

Triangles _____

Rectangles _____



A decorative floral border in the top-left corner, featuring green vines, red and yellow flowers, and small red berries.

Thank you!

I appreciate you taking the time to
make **and** behold art today.

Art is for everyone.

It is the process, not the product.

