



Division of Early Education Services  
Migrant Head Start Programs (MHSP)

**RIVERSIDE COUNTY  
OFFICE OF EDUCATION**



**MIGRANT HEAD START  
PROGRAMS**

Serving Children and Families  
in Coachella and Imperial Valleys

**ANNUAL REPORT 2023-2024**



We are pleased to share the Riverside County Office of Education 2023–2024 Migrant Head Start Annual Report. This report highlights the remarkable impact of our Migrant Head Start programs, which were made possible through the dedication of our staff, the active engagement of our families, and the invaluable support of our community partners. This report proudly showcases how we've worked together to promote school readiness by enhancing developmentally appropriate practices and preparing families through comprehensive services. Migrant Head Start strives to provide a foundation for early childhood education, parent engagement, and child health to ensure an environment of responsive care leading to successful preparation for kindergarten.

Thank you for being part of this vital journey.

A handwritten signature in black ink that reads "Edwin Gomez". The signature is fluid and cursive, with the first letters of the first and last names being capitalized and prominent.

Edwin Gomez, Ed.D.  
Riverside County  
Superintendent of Schools

# RIVERSIDE COUNTY OFFICE OF EDUCATION (RCOE)

## PLEDGE, MISSION, VISION, AND CORE VALUES

### PLEDGE

Every student in Riverside County will graduate from high school academically and socially prepared for college, the workforce, and civic responsibility.

### MISSION

The mission of the Riverside County Office of Education is to ensure the success of all students through extraordinary service, support, and partnerships.

### VISION

The vision of the Riverside County Office of Education is to be a collaborative organization characterized by the highest quality employees providing leadership, programs, and services to school districts, schools, and students countywide.

### CORE VALUES

- Building Relationships That Promote Trust
- Engaging in Open and Honest Communication
- Focusing on the Needs of Students and Children

## MIGRANT HEAD START PROGRAMS

### VISION

To promote school readiness, recruit, and enroll children with disabilities, and a strong community and parent involvement.

### MISSION

Riverside County Office of Education Migrant Head Start, in partnership with parents and community partners, facilitates access to comprehensive services for eligible migrant/seasonal farm worker children and their families. We provide a foundation for early childhood education, parental awareness and training of child health, growth, and development. We ensure an environment of responsive care-giving that leads towards school-readiness.

## RCOE DIVISION OF EARLY EDUCATION SERVICES

The RCOE Division of Early Education Services provides direct oversight of federally funded programs including the Migrant Head Start Programs (MHSP), center based and family child care services and Early Head Start - Child Care Partnerships. These programs serve income-eligible farmworker families in Riverside and Imperial Counties. By focusing on high quality school readiness programming and evidenced-based curricula as well as comprehensive health services, family support services and healthy meals, MHSP remains ever committed to early childhood education and empowering families on their path to self-sufficiency and life-long success.

# PROGRAM LEADERSHIP

## RIVERSIDE COUNTY OFFICE OF EDUCATION (GRANTEE)

Riverside County Superintendent of Schools: Dr. Edwin Gomez

RCOE Deputy Superintendent of Schools: Dr. Ruth Perez

RCOE Assistant Superintendent Early Learning Services: JoAnne Lauer

RCOE Migrant Head Start Programs Executive Director: Jose E. Martinez

## 2023–2024 POLICY COUNCIL MEMBERS

Chairperson: Carla Lopez

Vice-Chairperson: Marisol Garcia

Secretary: Jessica Mendez

Treasurer: Diana Yee

Treasurer Alt: Daisy Flores

Sergeant-at-Arms: Cinthya Tovar

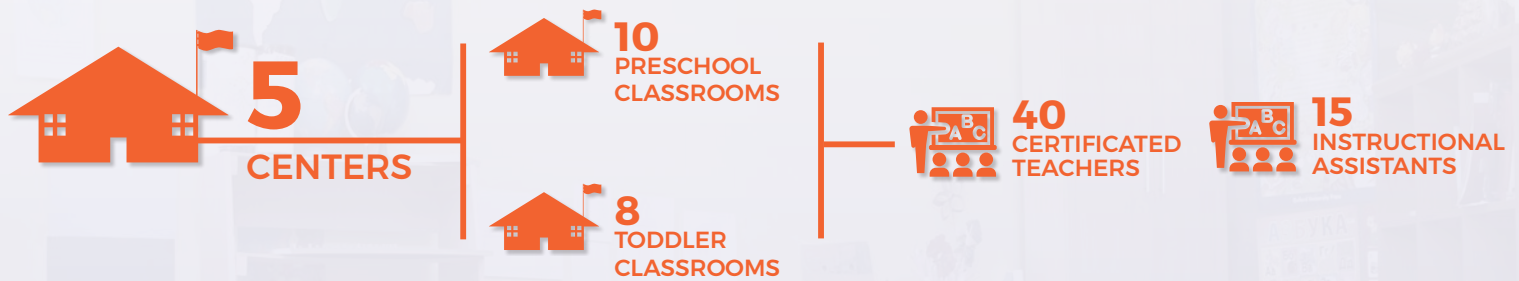
FCC Rep: Lidia Cisneros

Community Rep: Vacant



# MHSP PROGRAM OPTIONS

## FULL DAY CENTER BASED (AGES 2-5)



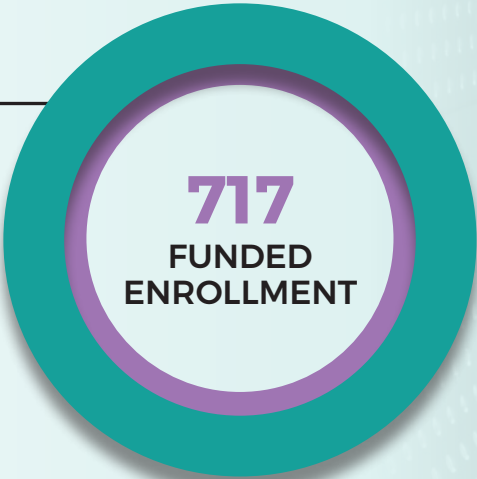
## FULL DAY FAMILY CHILD CARE-FCC (AGES 0-5)



# FUNDED ENROLLMENT

## MHSP GRANT

**762**  
Children  
Served

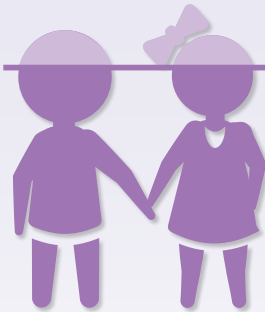


Percentage of eligible children serves 106%  
\*Exceeded Funded enrollment

MHSP Percentage of Average Monthly Enrollment 84%  
\*MHSP has a cumulative enrollment obligation.



**618** FAMILIES  
SERVED



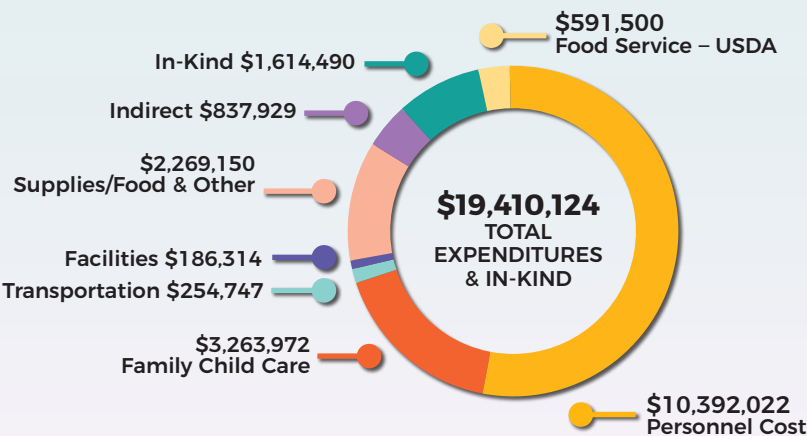
**85%**  
AVERAGE  
MONTHLY  
ATTENDANCE

# FINANCIALS

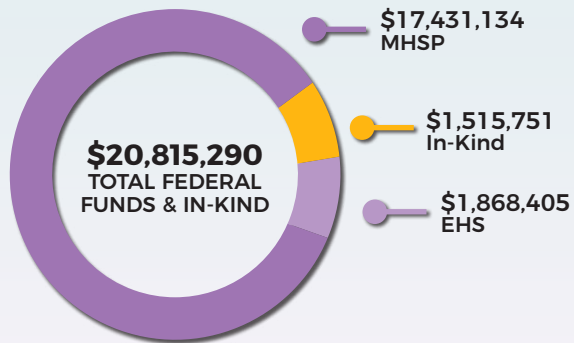
The RCOE Fiscal Services Unit supports Migrant Head Start programs with guidance and monthly financial reporting to policy council members and governing body, in addition to meeting regularly with RCOE management team. The effectiveness of the Fiscal Services Unit is reflective in the positive results of annual independent RCOE audits as well as successful OHS Federal Reviews.

The Riverside County Office of Education Migrant Head Start Program (MHSP) completed a Focus Area 2 (FA2) federal monitoring review in March 2021 and was found to be meeting compliance with applicable federal regulations. The financial audit for the year ending June 2024 identified no findings.

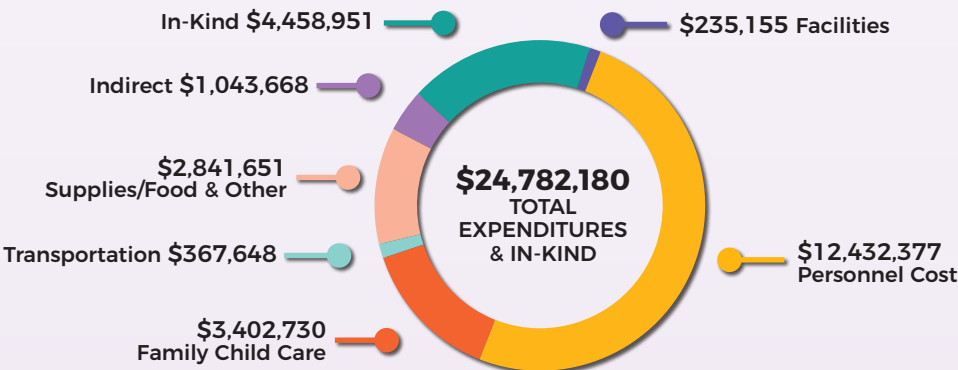
## 2023-2024 GRANT EXPENDITURES



## 2023-2024 FUNDING GRANT SOURCES/REVENUE



## 2024-2025 PROPOSED EXPENDITURES



# HEALTH SERVICES



PERCENTAGE  
OF CHILDREN  
WITH HEALTH  
INSURANCE

**98%**



PERCENTAGE  
OF CHILDREN  
UP-TO-DATE  
ON HEALTH  
REQUIREMENTS

**88%**



PERCENTAGE  
OF CHILDREN  
WHO RECEIVED  
DENTAL  
ASSESSMENTS

**85%**



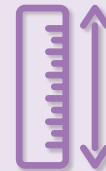
PERCENTAGE  
OF CHILDREN  
WITH VISION  
SCREENINGS  
COMPLETED

**92%**



PERCENTAGE  
OF CHILDREN  
WITH HEARING  
SCREENINGS  
COMPLETED

**91%**



PERCENTAGE  
OF CHILDREN  
WITH GROWTH  
ASSESSMENTS  
COMPLETED

**95%**

# DISABILITIES SERVICES



**14%**

PERCENTAGE OF CHILDREN  
WITH SPECIAL NEEDS (IEP/IFSP)  
BASED ON FUNDED  
ENROLLMENT

**13%**

PERCENTAGE OF CHILDREN  
WITH SPECIAL NEEDS (IEP/IFSP)  
BASED ON YEAR-TO-DATE  
ENROLLMENT

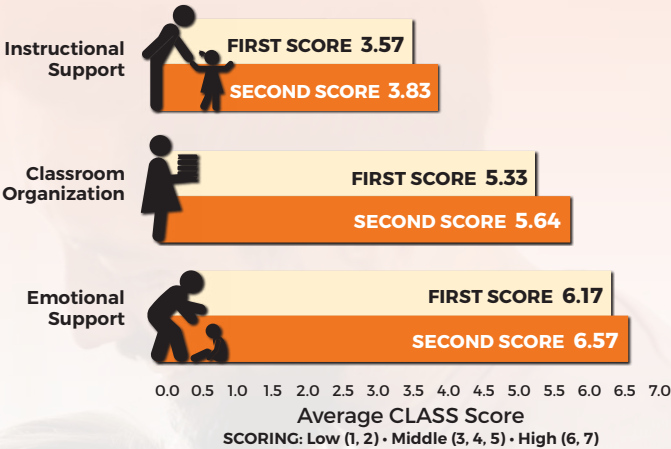


# SCHOOL READINESS

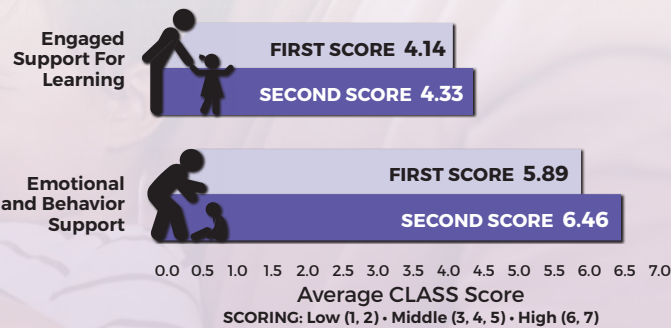
## 2023-2024 CLASSROOM ASSESSMENT SCORING SYSTEM (CLASS®)

The program utilizes the Classroom Assessment Scoring System (CLASS®) observation instrument that assesses the quality of teacher-child interactions in center-based preschool classrooms. CLASS® includes three domains or categories of teacher-child interactions that support children's learning and development: (1) Emotional Support, (2) Classroom Organization, and (3) Instructional Support. Within each domain are dimensions that capture more specific details about teachers' interactions with children.

## 2023-2024 CLASS SCORES PRE-K (MIGRANT HEAD START)

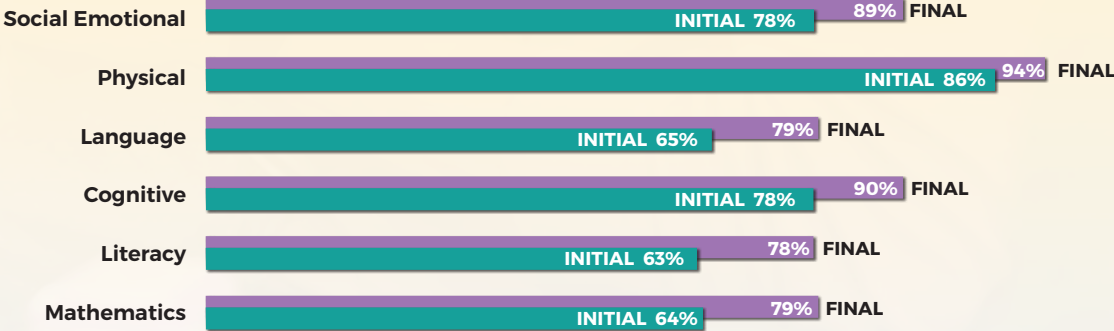


## 2023-2024 CLASS SCORES TODDLER (MIGRANT HEAD START)



## 2023-2024 TEACHING STRATEGIES GOLD ONGOING ASSESSMENTS

TEACHING STRATEGIES GOLD is used to measure progress in six areas of development. On average children demonstrated growth and are within age expectation.



# PARENT, FAMILY, + COMMUNITY ENGAGEMENT

Family engagement focuses on culturally and linguistically responsive relationship-building with key family members in a child's life. It requires making a commitment to creating and sustaining an ongoing partnership that supports family well-being. It also honors and supports the parent-child relationships that are central to a child's healthy development, school readiness, and well-being.

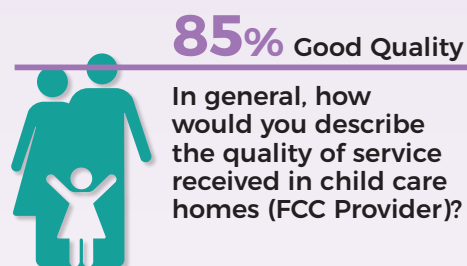
These are some examples of our Community Partnerships:

- Catholic Charities Foster Grandparent Program
- Border Kindness
- Bright Light Dental
- Inner Care
- First Five
- Loma Linda University
- Borrego Health
- Imperial County Health Department
- Imperial County Behavioral Health
- Riverside County Department of Mental Health
- Woman, Infants and Children (WIC)
- Indio Surgery Center
- UCLA School of Dentistry
- Regional Centers (San Diego & Inland)
- Altura Credit Union
- Local School Districts
- RCOE Early Education Services Unit

These are some examples of our Parent Involvement Activities:

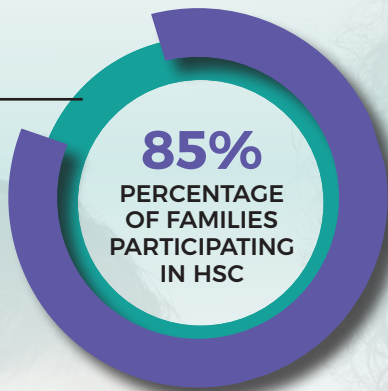
- Health & Nutrition Education
- Positive Discipline/Emotional Wellness
- Parent Leadership Training
- Emergency Preparedness
- Support for children with Disabilities
- Mental Wellness
- School Readiness/Transition
- Adult Education
- Pedestrian Safety
- Child Development
- Post-partum Depression
- Family Goal Setting

## 2023-2024 PARENT SURVEY HIGHLIGHTS



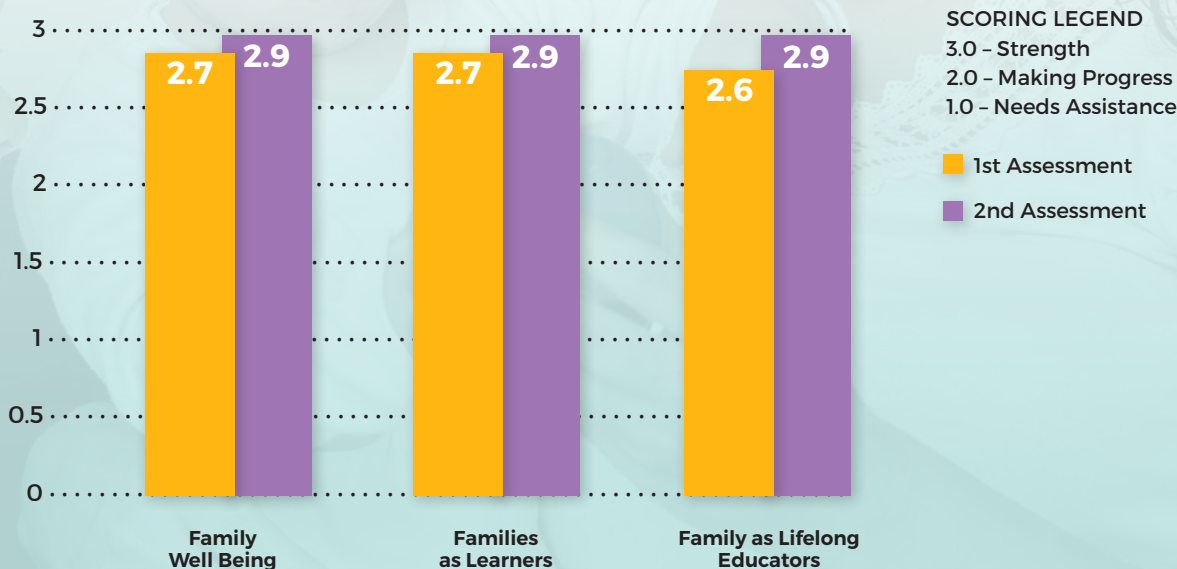
# 2023–2024 HOME SCHOOL CONNECTION (HSC)

MHSP Total Enrolled Families  
**618**



## 2023–2024 MHSP FAMILY OUTCOMES

As a result of participation in MHSP parent engagement activities and support, family outcomes assessment demonstrates parents have made measurable gains in the following areas:



# MIGRANT HEAD START PROGRAM SITES

## MIGRANT HEAD START PROGRAMS CENTRAL OFFICE

Division of Early Education Services

370 Aurora Drive  
El Centro, CA 92243  
(760) 337-1555 / (760) 337-1478 Fax

## BRAWLEY CENTER

1455 East Magnolia Street  
Brawley, CA 92227  
(760) 344-9083 / (760) 344-9113 FAX

## CALEXICO CENTER

1120 East 7th Street  
Calexico, CA 92231  
(760) 768-3500 / (760) 768-3502 FAX

## EL CENTRO CENTER

375 South 1st Street  
El Centro, CA 92243  
(760) 337-3940 / (760) 370-0405 FAX

## MECCA CENTER

62-900 Lincoln Ave, Suite P  
Mecca, CA 92254  
(760) 863-3350 / (760) 396-9192 FAX

## THERMAL CENTER

87-220 Church Street  
Thermal, CA 92274  
(760) 863-3250 / (760) 399-1840 FAX

For more information on our Migrant Head Start Programs  
please visit us at [www.rcoe.us/mhs](http://www.rcoe.us/mhs) or call us at (760) 337-1555

Find us on  @rcoemhsp

 @rcoemigrantheadstart